



2 Maple Mews, London, E3 4ZB

£738 Per Week

COMING SOON

TWO BEDROOM TWO BATHROOM APARTMENT IN BOW GREEN E3 COMPLETING LATE JUNE 26

BRAND NEW ZONE 2 DEVELOPMENT WITH AMAZING FACILITIES & HIGH SPECIFICATION

FACILITIES INC: INDOOR & OUTDOOR POOLS, GYM, BOXING CLUB, IMAX CINEMA, CONCIERGE, WORKING LOUNGES AND ACRES OF LANDSCAPED GARDENS*

3 STATIONS ALL IN CLOSE PROXIMITY

FURNISHED
AVAILABLE LATE JUNE

*Not all amenities may be open upon completion of these units.

- BRAND NEW LUXURY DEVELOPMENT
- AVAILABLE LATE JUNE 26
- ZONE 2, CHOICE OF 3 STATIONS & DLR
- COMING SOON
- BOW GREEN E3
- FACILITIES INC 2 POOLS (INDOOR & OUTDOOR)
- 24 HOUR CONCIERGE
- LOCATED BETWEEN THE CITY & CANARY WHARF
- GYM, IMAX CINEMA, BOXING CLUB, RES LOUNGES
- TWO BEDROOMS & TWO BATHROOMS

2 Maple Mews, London, E3 4ZB



RECEPTION (PHOTO OF SIMILAR APARTMENT)



BEDROOM (PHOTO OF SIMILAR APARTMENT)



DINING AREA/KITCHEN (PHOTO OF SIMILAR APARTMENT)



KITCHEN (PHOTO OF SIMILAR APARTMENT)



BEDROOM (PHOTO OF SIMILAR APARTMENT)



BATHROOM (PHOTO OF SIMILAR APARTMENT)

2 Maple Mews, London, E3 4ZB



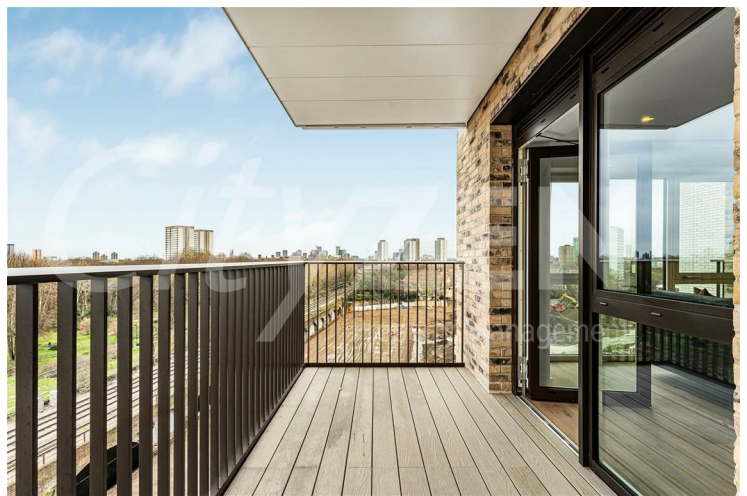
EN-SUITE (PHOTO OF SIMILAR APARTMENT)



BEDROOM (PHOTO OF SIMILAR APARTMENT)



DINING AREA/RECEPTION (PHOTO OF SIMILAR APARTMENT)



BALCONY (PHOTO OF SIMILAR APARTMENT)



RECEPTION (PHOTO OF SIMILAR APARTMENT)



BEDROOM (PHOTO OF SIMILAR APARTMENT)

2 Maple Mews, London, E3 4ZB



KITCHEN (PHOTO OF SIMILAR APARTMENT)



RECEPTION (PHOTO OF SIMILAR APARTMENT)



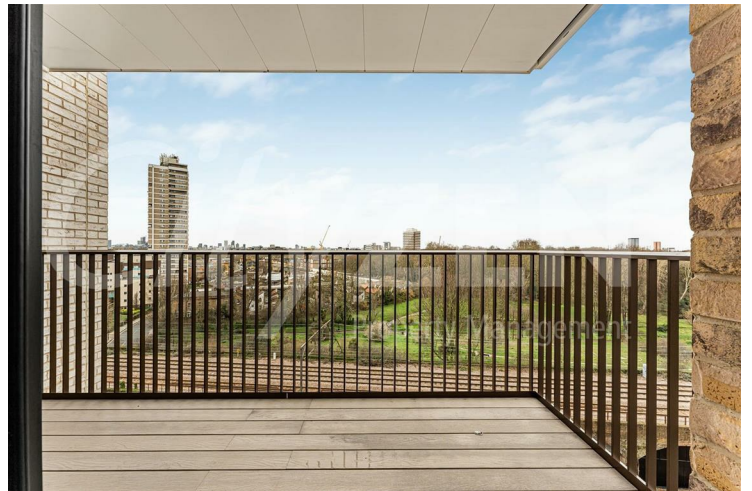
RECEPTION (PHOTO OF SIMILAR APARTMENT)



BEDROOM (PHOTO OF SIMILAR APARTMENT)



RECEPTION (PHOTO OF SIMILAR APARTMENT)

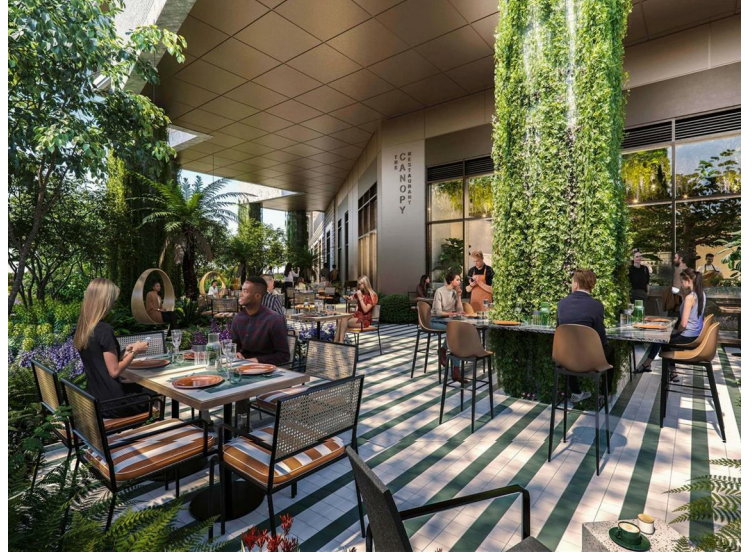


BALCONY (PHOTO OF SIMILAR APARTMENT)

2 Maple Mews, London, E3 4ZB



BALCONY (PHOTO OF SIMILAR APARTMENT)



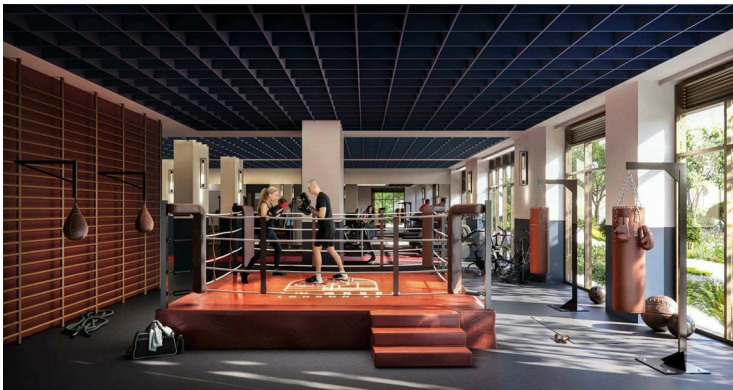
DEVELOPERS IMAGES



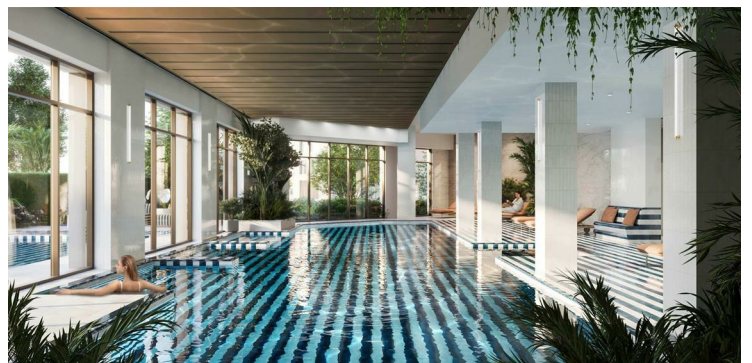
DEVELOPERS IMAGES



SWIMMING POOL



DEVELOPERS IMAGES



DEVELOPERS IMAGES

2 Maple Mews, London, E3 4ZB



DEVELOPERS IMAGES



HALLWAY (PHOTO OF SIMILAR APARTMENT)



DEVELOPERS IMAGES



BATHROOM (PHOTO OF SIMILAR APARTMENT)



BEDROOM (PHOTO OF SIMILAR APARTMENT)



BEDROOM/EN-SUITE (PHOTO OF SIMILAR APARTMENT)

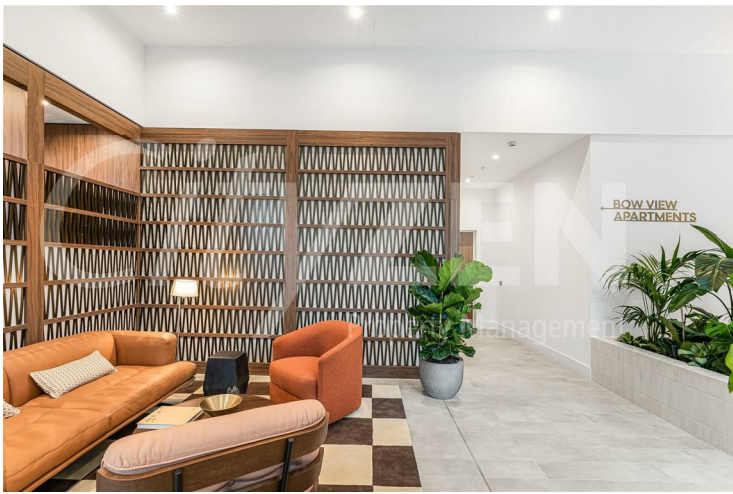
2 Maple Mews, London, E3 4ZB



BEDROOM (PHOTO OF SIMILAR APARTMENT)



RESIDENT'S GAMES ROOM



COMMUNAL LOUNGE AREA



BOW GREEN



RESIDENT'S GAMES ROOM



CINEMA ROOM

2 Maple Mews, London, E3 4ZB

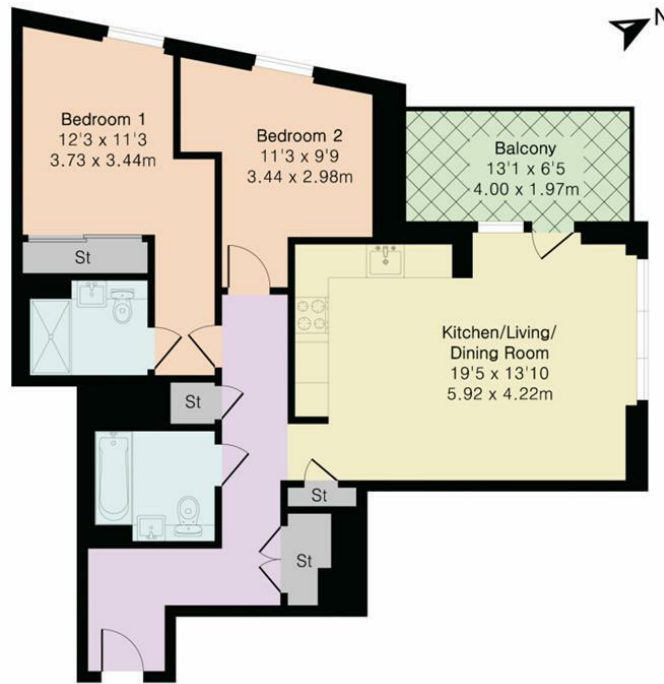


BOW GREEN



BOXING RING

Approximate Gross Internal Area 842 sq ft - 78 sq m



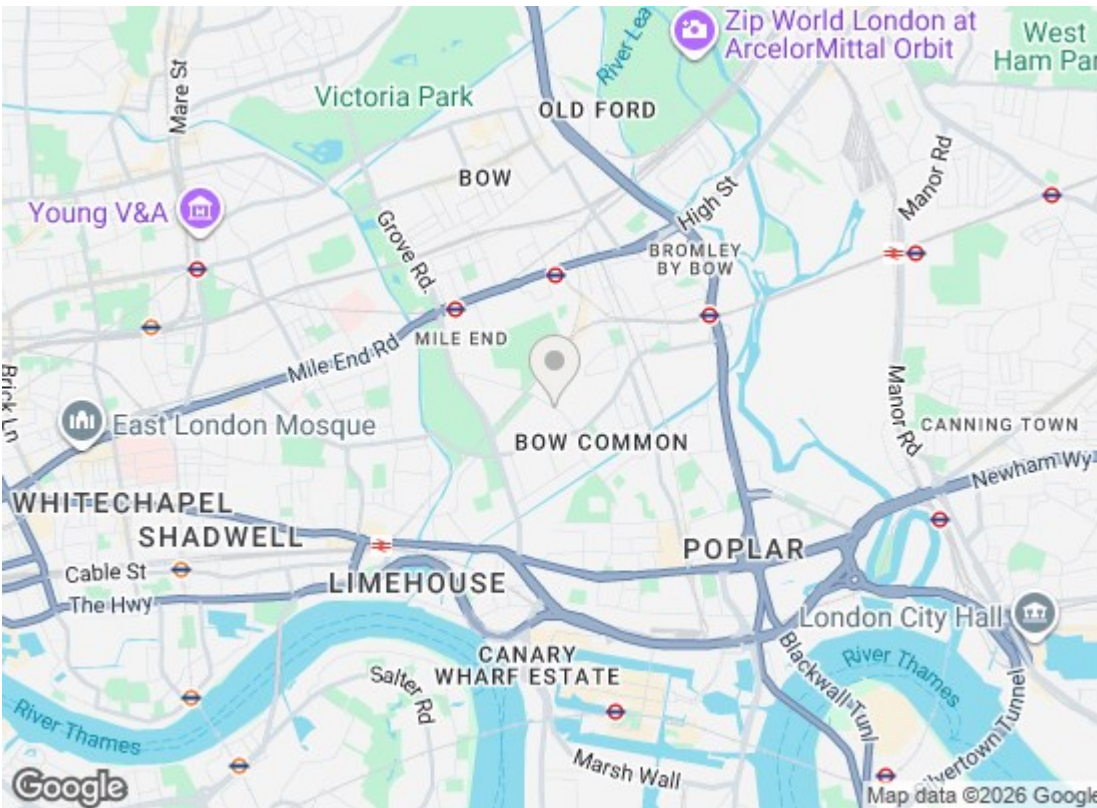
Seventh Floor



Floor plan produced in accordance with RICS Property Measurement 2nd Edition. Although Pink Plan Ltd ensures the highest level of accuracy, measurements of doors, windows and rooms are approximate and no responsibility is taken for error, omission or misstatement. These plans are for representation purposes only and no guarantee is given on the total square footage of the property within this plan. The figure icon is for initial guidance only and should not be relied on as a basis of valuation.



Energy Efficiency Rating		
	Current	Potential
Very energy efficient - lower running costs		
(92 plus) A		
(81-91) B		
(69-80) C		
(55-68) D		
(39-54) E		
(21-38) F		
(1-20) G		
Not energy efficient - higher running costs		
England & Wales		EU Directive 2002/91/EC
Environmental Impact (CO ₂) Rating		
	Current	Potential
Very environmentally friendly - lower CO ₂ emissions		
(92 plus) A		
(81-91) B		
(69-80) C		
(55-68) D		
(39-54) E		
(21-38) F		
(1-20) G		
Not environmentally friendly - higher CO ₂ emissions		
England & Wales		EU Directive 2002/91/EC



We have prepared these property particulars as a general guide to a broad description of the property. They are not intended to constitute part of an offer or contract. We have not carried out a structural survey and the services, appliances and specific fittings have not been tested. All photographs, measurements, floorplans and distances referred to are given as a guide only and should not be relied upon for the purchase of carpets or any other fixtures or fittings. Lease details, service charges and ground rent (where applicable) and council tax are given as a guide only and should be checked and confirmed by your Solicitor prior to exchange of contracts.